



WITH CORONA  
h52.3×w43.5cm, 2021  
プリマグラフィ  
primography

## 横尾 忠則 | Tadanori YOKOO

Born in Nishiwaki City, Hyogo Prefecture in 1936. After working as a graphic designer for the Kobe Shimbun, he became independent. In the 1960s, his work for Shuji Terayama and Jūrō Kara's theatrical posters attracted a great deal of attention, and in 1969 he won the Grand Prize in the print category at the Biennale for Young Artists in Paris.

In 1972, he had a solo exhibition at the Museum of Modern Art in New York, and gained a huge following during the heyday of drug culture and counterculture in the 1970s. Since then, he has been involved in a variety of art projects as an artist.

His representative works include the "Koshimaki-Osen" series, the "Pink Girl" series, the "From the Fun Venue of the World Exposition in Japan" series, the "Waterfall" series, the "Y-Junction" series, and many others.

He continues his vigorous creative activities as a representative artist of the times, using his inexhaustible imagination and a variety of techniques.

1936 Born in Nishiwaki City, Hyogo Prefecture  
1956 Joined the Kobe newspaper company  
2013 Opening of Teshima Yokoo Museum Solo exhibition  
1972 Solo exhibition at the Museum of Modern Art, New York  
1997 Solo exhibition at The Museum of Modern Art, Hyogo / The  
Museum of Modern Art, Kanagawa  
2001 Solo exhibition at The Museum of Modern Art, Toyama / Hara  
Museum of Contemporary Art, Tokyo  
2002 Solo Exhibition at Museum of Contemporary Art Tokyo /  
Hiroshima City Museum of Contemporary Art  
2003 Solo Exhibition at The National Museum of Modern Art, Kyoto  
2005 Solo exhibition at Contemporary Art Museum, Kumamoto,  
Japan  
2006 Solo exhibition at Fondation Cartier pour l'art contemporain,  
Paris, France  
2008 Setagaya Art Museum, Tokyo, Japan / Hyogo Prefectural  
Museum of Art, Hyogo, Japan  
2009 Solo exhibition at 21st Century Museum of Contemporary Art,  
Kanazawa  
2010 Solo Exhibition at The National Museum of Art, Osaka  
2011 Solo exhibition at Okayama Prefectural Museum of Art / Kochi  
Prefectural Museum of Art  
2014 Solo exhibition at Kirishima Art Forest  
2016 Solo exhibition at The Hakone Open-Air Museum  
Solo exhibition at National Museum of Oriental Art, Russia  
2017 Solo exhibition at Machida City Museum of Graphic Arts Solo  
exhibition at Towada City Museum of Contemporary Art  
2019 Solo exhibition at Okanoyama Museum of Art, Nishiwaki City  
2021 Solo exhibition at Aichi Prefectural Museum of Art, Japan

## Awarded

1969 Grand Prix, 6th Paris Biennale for Young Artists, Print Division  
1974 Gold Prize at the 5th Warsaw International Poster Biennale  
2000 Inducted into the New York ADC Hall of Fame  
2001 Received the Medal with Purple Ribbon  
Awarded the 36th Izumi Kyoka Literature Prize for his novel  
"Buruurando" (serialized in "Bungakukai")  
2011 Awarded the Order of the Rising Sun, Gold Rays with Rosette  
Received the Asahi Award  
2013 Awarded the Kobe Shimbun Peace Prize Awarded the title of  
Honorary Citizen of Nishiwaki City (No.1)  
2014 Awarded the Yamana Prize of the Japan Advertising Awards  
2015 Awarded the 27th Prince Takamatsu Memorial World Culture  
Prize

## Group Exhibition

1985 Invited to exhibit at the 13th Paris Biennale  
Invited to exhibit at the 18th Sao Paulo Biennale  
1986 Exhibited at the Centre Pompidou, Paris  
1986 Exhibited at "Japan in the Avant-garde 1910-1970", Centre  
Georges Pompidou, Paris  
1993 Exhibited at the 45th Venice Biennale  
1994 Exhibited at "Avant-garde Art in Postwar Japan", Yokohama  
Museum of Art / Guggenheim Museum Soho  
2012 Exhibited at "Double Vision - Japanese Contemporary Art",  
Moscow Private Art Museum, Russia / Haifa Art Museum, Israel

YUKIKOMIZUTANI will present oil woodblock print series "SHARAKU-THE FIVE CONSTELLATIONS" by Tadanori Yokoo, inspired by the actor paintings of Toshusai Sharaku, and 10 types of water-based woodblock print series "Surirezurirekusa". The name of the aqueous woodblock print series "Suresuregusa" is taken from Kenko Yoshida's Tsurezuregusa, but the work itself is a fake of Sharaku's Yakusha-e (actor picture), and the name "Suresuregusa" is derived from the word "sure" (to print).

When Yokoo created theatrical art for the stage of Jusuke Hanayagi, he showed slides based on the actor's picture. This print work is a further development of the stage art based on the actor's picture.

Normally, in the process of printmaking, we are very nervous not to make "deviations", but this time, by emphasizing the "deviations", Yokoo dared to deliberately play a major failure, emphasizing the carelessness of nerves in the printmaking process. In terms of color, Yokoo also dares to create disharmony in this work. Creating works based on Ukiyoe, a popular media in the Edo period, and reproducing them as woodblock prints is similar to the method of Pop Art represented by Andy Warhol.

Based on a well-known yakusha-e (actor) picture by Toshusai Sharaku, this work rediscovers the technique of woodblock printing and brings out the possibilities of new arrangements by "shifting" the original ukiyo-e process, in which multiple woodblocks are printed so that they overlap exactly. This work truly changes the way we look at everyday life.





Sharaku - the five constellations  
h80 × w52.0cm, 2021  
油性木版画  
woodblock print



Sharaku - the five constellations  
h80 × w52.0cm, 2021  
油性木版画  
woodblock print



摺れ摺れ草 - 三代目佐野川市松の祇園町の  
白人おなよと市川富右衛門の蟹坂藤馬  
h38.5 × w24.6cm, 2021  
越前生漉奉書（紙漉：人間国宝・九代目岩野市兵衛）  
Echizen Kizuki Hosho Washimade  
(Living National Treasure, Ichibei Iwano)



摺れ摺れ草 - 三代目坂東彦三郎の鷺坂左内  
h38.7 × w25.1cm, 2021  
越前生漉奉書（紙漉：人間国宝・九代目岩野市兵衛）  
Echizen Kizuki Hosho Washimade  
(Living National Treasure, Ichibei Iwano)

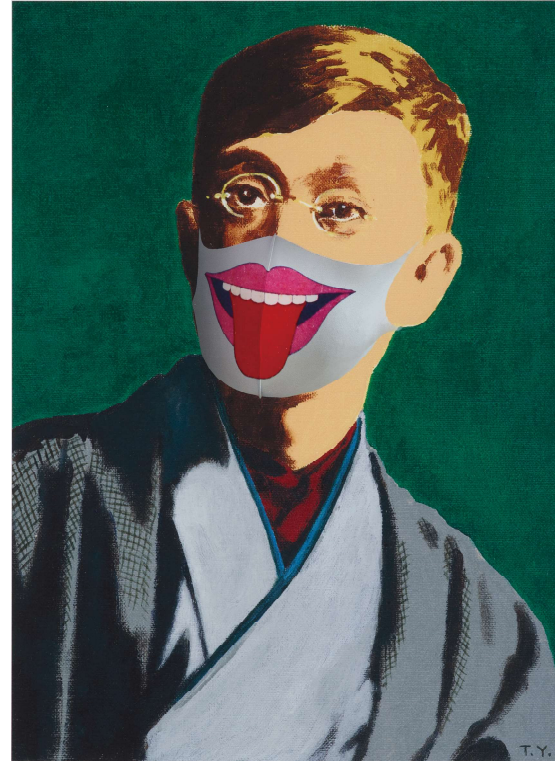


摺れ摺れ草 - 八代目森田勘弥の駕かき鶯の次郎作  
h38.5 × w24.1cm, 2021  
越前生漉奉書（紙漉：人間国宝・九代目岩野市兵衛）  
Echizen Kizuki Hosho Washimade  
(Living National Treasure, Ichibei Iwano)



摺れ摺れ草 - 芸者姿の二代目瀬川富三郎  
h38.7 × w26.1cm, 2021  
越前生漉奉書（紙漉：人間国宝・九代目岩野市兵衛）  
Echizen Kizuki Hosho Washimade  
(Living National Treasure, Ichibei Iwano)

The Mask Portrait series is a redevelopment of Yokoo's previous works. The mask portraits, whose expressions are obscured by the masks, were created from the perspective of accepting and coexisting with the virus, rather than confronting it, using the contemporary global epidemic as the source of creation. Yokoo's humor can be felt in these works, which comically and cynically express the recent crisis situation where everyone wears masks and the strangeness of his works has become a part of daily life. His previous works also show a different expression when he wears a mask.

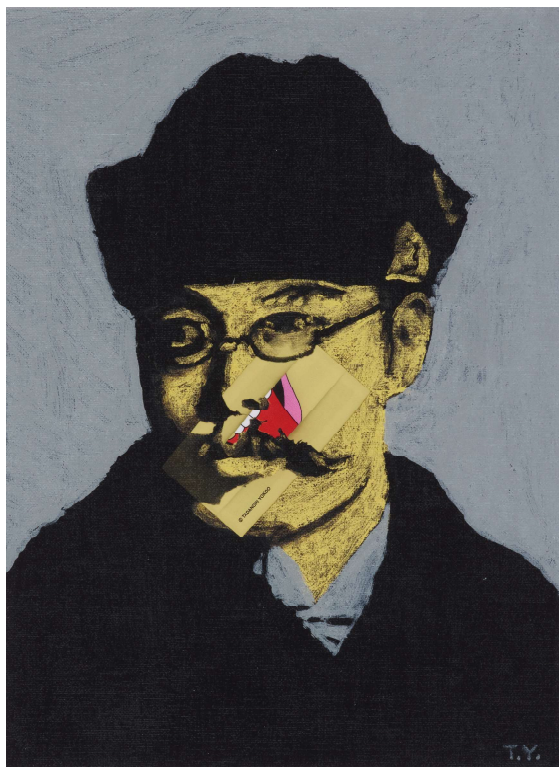


WITH CORONA 泉鏡花

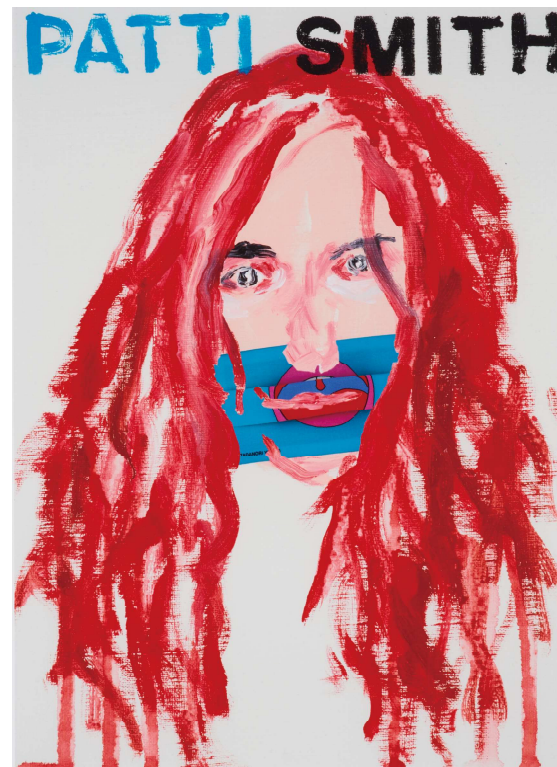
h62.3 × w47.3cm, 2021

プリマグラフィ

primography



WITH CORONA 二葉亭四迷  
h62.3 × w47.3cm,2021  
プリマグラフィ  
primography



WITH CORONA - Patti Sumith  
h40.7 × w29.7cm,2021  
プリマグラフィ  
primography





WITH CORONA  
h52.5xw44.3cm, 2021  
プリマグラフィ  
primography



WITH CORONA  
h52.3xw40.0cm, 2021  
プリマグラフィ  
primography







# YUKIKOMIZUTANI

PIER WEST SQUARE 1F 1-11-8

Tsukuda, Chuo-Ku, Tokyo JAPAN

TEL : +81-3-5548-5858

[office@galleryartcomposition.com](mailto:office@galleryartcomposition.com)

<https://www.galleryartcomposition.com/>